



PRIVATE CABIN JETS

Exclusive Offering

Ultra-Low-Time Challenger 300

SN-20209 EIS-Dec2008 N-Reg

Featuring

ProLine 21 Advanced Cockpit w/ ADS-B Out v2 / CPDLC / FANS-1A+ / LPV / WAAS





Bombardier Challenger 300

SN-20209 N184BK EIS: May2008

Airframe & Engines:

Airframe: 1308 Hours TTSN Cycles: 652
Left Engine: 1308 Hours TSN Cycles: 652 SN-118551
Right Engine: 1308 Hours TSN Cycles: 652 SN-118558
No Major Inspections Due Until 96Mo. Sept2024

Engines: Honeywell HTF-7000
Engines on MSP Gold
APU: 1203 Hours --- Honeywell 36-150BD In-Flight APU
APU on MSP

Avionics on CASP:

Collins Proline 21 ADVANCED Avionics Suite – w/ ADS-B Out v2 / CPDLC / FANS-1A+ / LPV / WAAS

EFIS: 4 LCD 10" x 12" Display Units
FMS: Dual FMS-5000 with V-Speeds & CDU
Comm: Dual VHF-4000 w/ 8.33 kHz Spacing
Nav: Dual VIR-4000 Navs
Nav: Dual ILS/VOR/MRK Navigation
Radar: WXR-854 Enhanced Color WX Radar
DME: Dual DME-4000
ADF: Single ADF-4000
AHRS: Dual AHRS AHC-3000
XPDR: Dual TDR-94D Mode S Enhanced Transponders
HF: Dual HF Collins HF-9031A Comms with SELCAL
GPS: Dual GPS Collins GPS-4000
RadAlt: Single Radio Altimeter ALT-4000
ELT: Artex 406 ELT – 3 Frequency w/ Nav
MDS: Maintenance Diagnostic System
AutoPilot: Collins FGC-3002

TCAS: TCAS-4000 TCAS-II (w/Change 7)
EICAS: EICAS w/ Data Concentrator
IFIS: Dual Paperless FSU IFIS
GPWS: Honeywell MK VII Enhanced w/ WS
ADC: Dual ADCs MDS-4100
AWS: Aural Warning System
CVR: L3 FA2100 120 Minute Digital
FDR: L3 FA2100
ECU-3000
DataLink
SatCom: Iridium ICG ICS-200
Dual Integrated Radio Control and Display
Dual Auto Flight Control Functions
3rd Audio Panel
Stall Warning and Identification
Intercom System

Additional Equipment:

RVSM	Over Water Flight Kit	Enhanced Baggage	MPM Integral Tail Cone Stepladder
PulseLights	3 life rafts	115 CuFt. Oxygen	16G Belted Toilet Seat
Standby Instrumentation	Wing Tip Strobes	Service Panel Lighting	Exterior Door Locking Package

Interior: New in 2008

Low utilization shows in this crisp 9 Passenger Executive Floorplan. Seating is in Townsend Classic Sand/Silk Leathers, with a Forward Four-Place Club, RH Aft Single Club opposite a 3-Place Fabric Berthable Divan. Headliner and Sidewalls in Ivory Tapis Ultra-Leather with Dado Panels of Townsend Classic Sand/Silk. Very Serviceable Kalogridis Gray with Blue Patterned Carpet Completes the Interior Soft Goods. Brilliant Woodwork is Sapele High-Gloss Figured Wood Veneer Cabinetry, Two Forward and One RS Aft Retractable Executive Tables w/ Stunning Wood Grain Surfaces.

Forward RS Galley w/Microwave & Nespresso, Stainless Steel Ice Drawer w/Overboard Drain, Dual Hot Liquid Containers, Dual Cup Dispensers, General Storage, Trash Compartment, Countertop w/LED lighting. Cabin Management & In-Flight Entertainment System, Airshow 410 w/Worldwide Mapping, iPod Docking Station, DVD/CD Player, Forward & Aft 20-Inch Flat-Screen LCD Monitors, Headphones w/Pouches, Flat Trim Panel Speakers, Four English Audio Briefings.

Accessory Items: Premium Plating Package w/Satin Nickel Fixtures, Therapeutic Oxygen Outlet, Individual Touch Screen Lighting & Entertainment Controls, Single VIP Touch Screen Panel, Four 115-volt 60 Hz Outlets, Forward Galley-to-Cabin Pocket Door Partition, Externally-Serviceable Aft Lav w/Vanity, Reading & Table lights, Emergency Lighting, Magazine Racks, Fabric Window Shades. Storage is Dado Boxes, Crew Closet w/Adjustable/Removable Shelves, Forward LS Wardrobe Cabinet, Arm/Side-Ledge Storage at Each Seat, Aft In-Fight Accessible Baggage, RS Aft Belted Lav Seat.

Exterior:

Overall White with Blue and Gray Accent Stripes on Body, Tail, and Winglets.

Disclaimer

Regardless of the use of this specification it is for informational purposes only and DOES NOT CONSTITUTE REPRESENTATIONS OR WARRANTIES OF ANY KIND. Purchaser bears sole and full responsibility for inspection and verification of all avionics and equipment installed in the aircraft. Such inspection or waiver of inspection supersedes this informational document. Aircraft subject to prior sale or withdrawal from the marketplace.



PRIVATE CABIN JETS



PRIVATE CABIN JETS LLC

BMasek@PrivateCabinJets.com www.PrivateCabinJets.com
540.364.2222



PRIVATE CABIN JETS



PRIVATE CABIN JETS LLC

BMasek@PrivateCabinJets.com www.PrivateCabinJets.com
540.364.2222



PRIVATE CABIN JETS



PRIVATE CABIN JETS LLC

BMasek@PrivateCabinJets.com www.PrivateCabinJets.com
540.364.2222



PRIVATE CABIN JETS



PRIVATE CABIN JETS LLC

BMasek@PrivateCabinJets.com www.PrivateCabinJets.com

540.364.2222



PRIVATE CABIN JETS

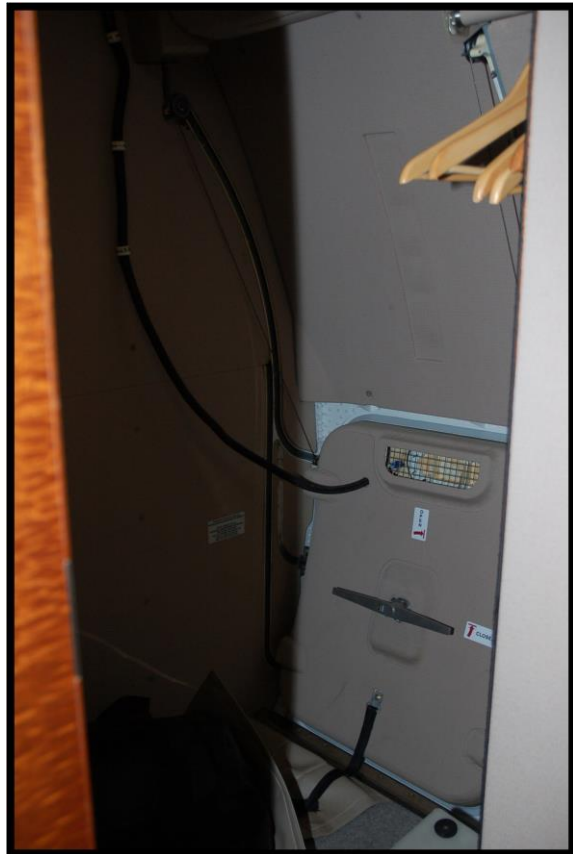


PRIVATE CABIN JETS LLC

BMasek@PrivateCabinJets.com www.PrivateCabinJets.com
540.364.2222



PRIVATE CABIN JETS



PRIVATE CABIN JETS LLC

BMasek@PrivateCabinJets.com www.PrivateCabinJets.com
540.364.2222



PRIVATE CABIN JETS



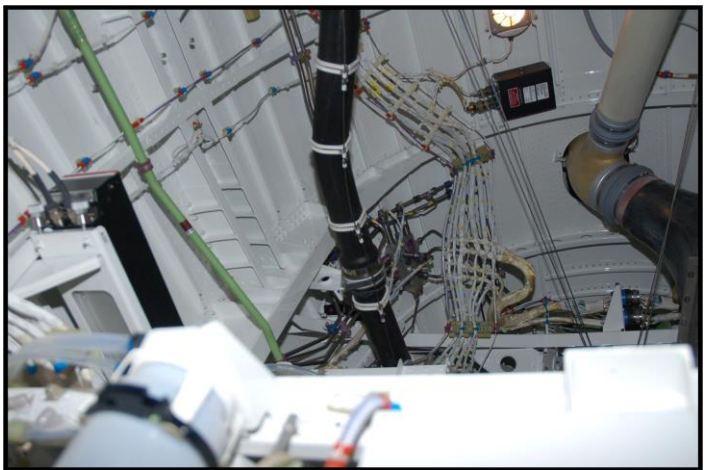
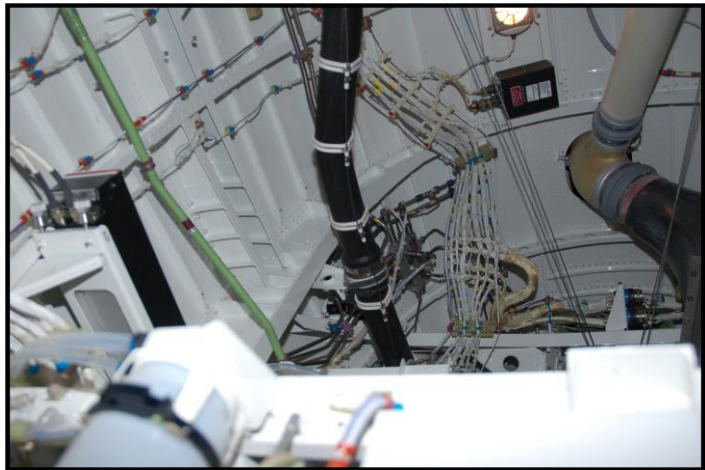
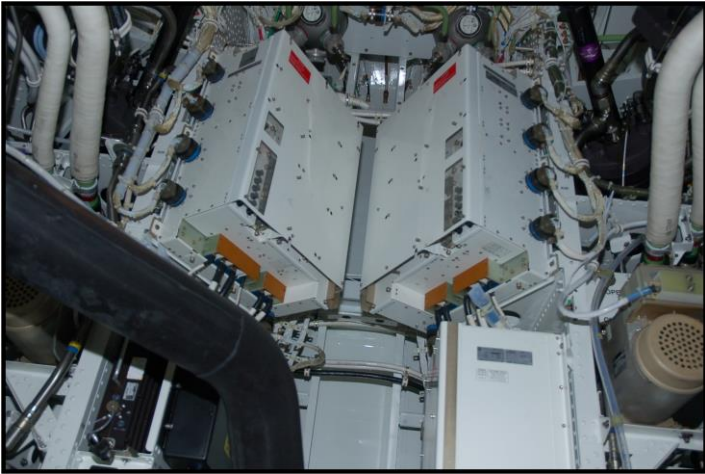
PRIVATE CABIN JETS LLC

BMasek@PrivateCabinJets.com www.PrivateCabinJets.com

540.364.2222



PRIVATE CABIN JETS



PRIVATE CABIN JETS LLC

BMasek@PrivateCabinJets.com www.PrivateCabinJets.com

540.364.2222



PRIVATE CABIN JETS



PRIVATE CABIN JETS LLC

BMasek@PrivateCabinJets.com www.PrivateCabinJets.com

540.364.2222



For More Information
Please Call

Bob Masek
Owner – Private Cabin Jets LLC
540.364.2222



2008 Challenger 300 SN-20209

1308 Total Time on Airframe --- on MSP Gold & MSP

This is one exceptionally well cared for Challenger 300.

PRIVATE CABIN JETS LLC

BMasek@PrivateCabinJets.com www.PrivateCabinJets.com
540.364.2222